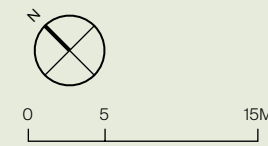
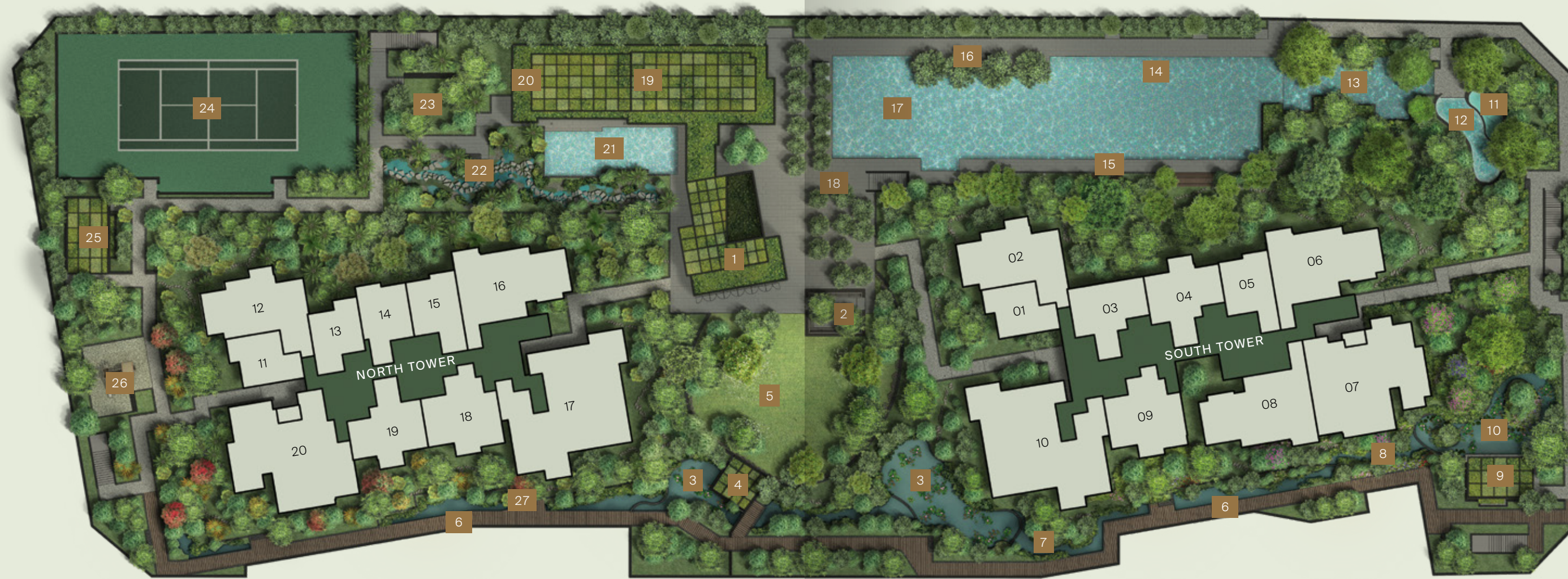


Site Plan

Level 3



Artist's Impression

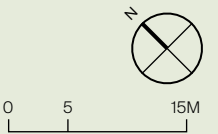
Level 3

- | | | | | | |
|-------------------|------------------|-------------------|--|-------------------|---------------------|
| 1 - Library | 6 - Forest Walk | 11 - Hot Spring | 16 - Sun Deck | 20 - The Gym | 25 - Play Pavilion |
| 2 - Garden Lounge | 7 - Summer Swale | 12 - Jacuzzi | 17 - 50m Lap Pool | 21 - Leisure Pool | 26 - Adventure Play |
| 3 - Water Garden | 8 - Spring Creek | 13 - Estuary Pool | 18 - Courtyard | 22 - Rain Garden | 27 - Autumn Creek |
| 4 - Lawn Pavilion | 9 - Tea House | 14 - Aqua Barre | 19 - Clubhouse
Club Dining 1, 2 & 3 | 23 - Pet Corner | |
| 5 - Grand Lawn | 10 - Lily Pond | 15 - Pool Terrace | 24 - Tennis Court | | |

North Tower Roof Gardens



South Tower Roof Gardens



Level 1



Level 1

- | | |
|--------------------|---------------------|
| 28 - North Garden | 32 - East Plaza |
| 29 - Arrival Plaza | 33 - City Room |
| 30 - South Garden | 34 - Arrival Lounge |
| 31 - South Plaza | 35 - Bike Park |

Roof Gardens

- | | |
|--|--|
| 36 - Peak View Pavilion
(North Tower) | 39 - Peak View Pavilion
(South Tower) |
| 37 - City View Pavilion
(North Tower) | 40 - City View Pavilion
(South Tower) |
| 38 - Karstic Peak Garden | |